

Waste Matters... Let's Get it Sorted!



AN INFORMATION BOOKLET ABOUT WASTE MANAGEMENT

This project is being implemented by WasteServ Malta Ltd. under the auspices of the Planning and Priorities Coordination Division, acting as Managing Authority for Malta's Structural Funds



WasteServ Malta Ltd

This project is part financed by the European Union
European Regional Development Fund

REDUCE, REUSE, RECYCLE

What can you do to help?

You can help to prevent pollution, conserve natural resources and reduce the amount of waste going to landfill by aiming to reduce, reuse and recycle.

Reduce

The first step in becoming more environment friendly is to reduce the amount of waste created in the home. Here are some practical tips on what to do.

- Avoid using plastic bags for shopping. Use canvas bags and reuse boxes to transport items.
- Use reusable plastic containers and lunch boxes to pack sandwiches and biscuits rather than plastic cling film.
- Use washable utensils and dishes for picnics, outdoor parties and barbeques.
- Use cloth napkins. Reach for a sponge or dishcloth instead of a

paper towel to clean up.

- Use internet banking for paying bills.
- Use up existing home chemicals, like paint, paint stripper, paint thinner and other chemicals, before buying more. You'll save money by not having to buy new products.
- When you have to use a battery-powered appliance or toy, choose rechargeable batteries. Keep in mind that after rechargeable batteries will no longer accept a charge, they should not be put in the garbage but must be collected separately. Battery bins are available at various outlets, local councils and schools.



Reuse

Reusing items instead of throwing them away and buying new items will help to reduce the amount of waste generated in the home.

- Reuse containers, jars and bottles as much as possible.
- Save and reuse gift boxes, ribbons and larger pieces of wrapping paper
- Repair equipment when possible
- Use refillable ink cartridges and toners
- Try to resell second hand items eg. furniture

Recycle

You can make recycling easier in your home by dedicating a small corner of the house to recycling by placing small containers such as cardboard boxes and using them as separation bins.

In the garden create a compost bin for organic waste such as fruit and vegetable stalks and skin, egg shells, tea bags etc

Recycling is simple as you will find out by following the instructions in this booklet.

Household hazardous waste

Chemicals are used in the home for many different purposes but they can be both harmful to the environment and your health. To identify a product that can become household hazardous waste look for these labels on the product - corrosive, flammable, reactive and toxic. Try to use natural alternatives to chemicals for cleaning, gardening, health and hygiene when possible.

In the garden you can use natural pesticides, such as coffee grounds and chilli powder, to deter ants. It can also help to keep fly screens in good condition.



400,000 tons of waste are generated by Maltese households every year. This is enough waste to fill 3 football grounds.



Almost half of our waste can be recycled.

THE IMPORTANCE OF WASTE SEPARATION...

THE NEXT STEP

What is Waste?

Waste is made up of all the items which we do not need any more. The disposal of our waste may be a source of pollution that affects the health of everyone. Waste generation is intrinsic to a country's quality of life. Annually and as time goes by, we are generating more and more waste, thus increasing the danger of polluting the environment.

Why should waste be separated?

Waste separation is essential for waste to be managed in a more efficient and sustainable manner. When waste is separated before thrown away, material that can be recycled is not polluted by other waste. In this way, the material collected is cleaner, making it possible to process into high quality recycled products. Waste separation also makes us more conscious of the amount of waste we generate and of the extent of work and investment that is required to manage it.

What is the Required Infrastructure?

Bring-In-Sites - These are four containers, where you may deposit your recyclable waste separately.

Civic Amenity Sites - These are sites where you can deposit bulky refuse, e.g. cookers, fridges, etc separately.

Waste Treatment Plant - A site with the required infrastructure and technology to process waste and produce stable products.

Material Recovery Facility (MRF) - A technology, that mechanically, allows the further separation of waste into different fractions.

What else?

The waste is generated by each and every one of us so we need everyone's cooperation. Industries, local councils, government departments, environmental groups, schools, young people, old people's homes and families all should make an effort to be informed and to play their part so that waste separation in our country is successful.



Every year waste generated at home increases by 3%. This means that by 2025, the amount of municipal waste will DOUBLE.

BRING-IN SITES



PAPER

What to put in the WHITE container

- Letter writing paper, office paper, printed paper and photocopies, envelopes
- Newspapers, magazines, catalogues, directories
- Cardboard Boxes (flat folded) including detergent boxes, frozen food boxes, cereal and pasta boxes
- Brochures and leaflets
- Exercise books and note books,
- Wrapping paper

What paper NOT to put in the white container

- Tissues and napkins
- Wet wipes
- Nappies
- Cellophane
- Adhesive Tape
- Labels and stickers
- Waxed Paper eg. milk cartons
- Used paper cups and plates
- Juice cartons



What happens to the waste paper you have collected?

Paper is collected separately by a truck and it is taken to the waste treatment plant. The truck collects each material separately and takes it to the waste treatment plant. Once the truck arrives at the facility, the amount of waste is weighed at the weighbridge. In this way WasteServ can keep track of the amount of paper received from bring-in sites. A receipt is issued showing that the recyclable waste has been received. The paper is then further sorted manually. For example, white paper is separated from glossy and coloured paper. This sorting is done because different kinds of materials are used for different uses and are sent to different companies for recycling. Further sorting is also required in order to ensure that there is no contamination of materials.

Different types of paper such as glossy paper, newspaper, white paper and cardboard are being exported for recycling. Paper which cannot be recycled into recyclable paper is used for composting. Some of the corrugated

cardboard is being shredded for animal bedding.

TIPS:

- In order to save space, fold boxes before putting them in the container
- Do not tear paper into small pieces. Waste paper is sorted before it is recovered and small pieces making sorting more difficult.
- When possible remove paper clips, staples and plastic from the paper.
- Do not leave waste outside the containers of the bring-in sites.



ALL WASTE SHOULD BE CLEAN AND DRY

**1 tonne of papers = 17 trees
About 6 trees a year are cut down to produce enough paper for one family**

PLASTIC

What to put in the BLUE container:

- Clean Containers for shower gels, shampoos, liquid soaps, detergents, cosmetic articles and cleaning agents.
- Cups and tubs for yoghurts and margarine (only if completely emptied and clean)
- Drinking bottles such as PET bottles
- Clean plastic bags
- Plastic caps, lids and covers



What plastic NOT to put in the BLUE container:

- Wrappers and containers contaminated with food
- Bottles still containing materials such as cleaning agents, cosmetics etc.
- Used cling film
- Bulky plastic items
- Lighters

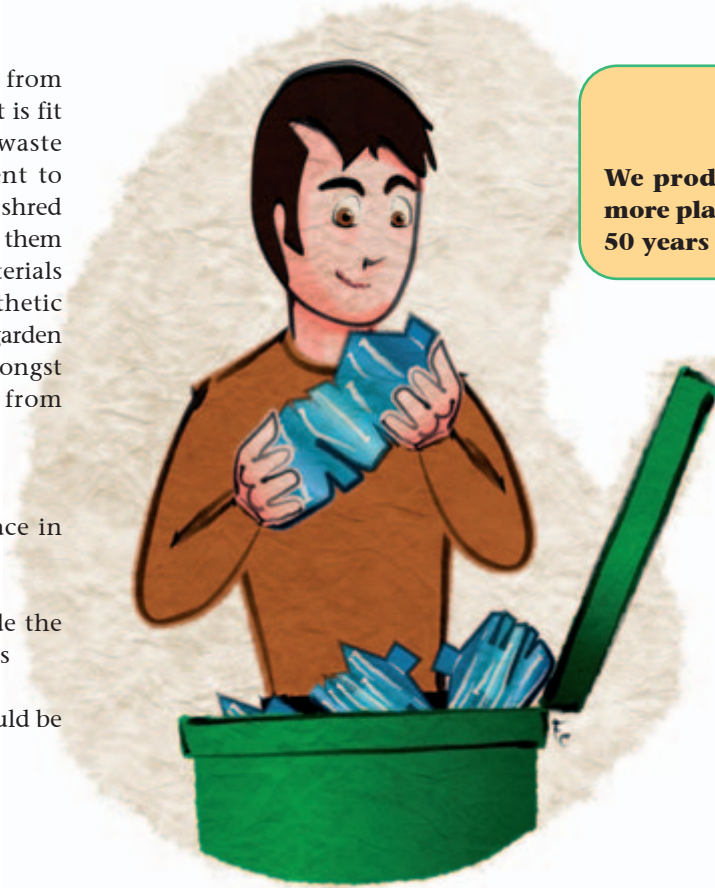


What happens to the plastic you have collected?

After being collected separately from the bring-in sites, the plastic that is fit for recycling is sorted at the waste treatment facility. It is then sent to different companies that process, shred and bale such materials and export them to be used as secondary raw materials in the plastics production. Synthetic carpets, plastic chairs, containers, garden furniture and stationary are amongst the objects that can be made from recycled plastic.

TIPS

- Squeeze bottles to save space in the containers
- Do not leave waste outside the containers of the bring-in sites
- All recyclable material should be clean



We produce and use 20 times more plastic today than we did 50 years ago!

GLASS

What to put in the BROWN container:

- Preserving Jars
- Containers
- Water, wine and spirit glass bottles

What glass NOT to put in the brown container:

- China
- Corks
- Lamps and Light bulbs
- Mirrors
- Window pains, drinking glasses
- Ceramics
- Lenses
- Thermometers



What happens to the glass you have collected?

New glass containers can be produced from waste glass without any loss of quality. Locally glass has also been used in tiles and also in concrete mixture replacing some of our natural minerals excavated for this use.

The use of waste glass saves resources and cuts the energy required in production of glass by about 50%.

TIPS

- Remove beer caps, crown corks, screw tops, corks, metal seals.
- Make use of schemes for returnable bottles or containers e.g soft drink bottles
- Do not leave waste outside the containers of the bring-in sites.



ALL WASTE SHOULD BE CLEAN AND DRY

Glass can be recycled a million times over without losing its quality.

METAL

What can I put in the BLACK container:

- Aluminum Cans
- Tin cans (clean)
- Metal caps and lids (e.g. from Jars and bottles)
- Spray cans (empty)



What metal NOT to put in the black container:

- Bulky metal waste
- Batteries
- Soiled foil
- Food cans that are not empty
- Paint and oil cans that are not completely empty



What happens to the metal you have collected?

Aluminium cans and tin cans collected from bring-in sites are exported for recycling by Maltese companies. Aluminium cans are baled while other metal items are melted and shaped into ingots. These ingots are then exported to other European countries.

TIPS:

- Only dispose of empty packaging and small metal items into the collection containers of the bring-in sites.
- Ensure that the cans are empty and if possible clean.

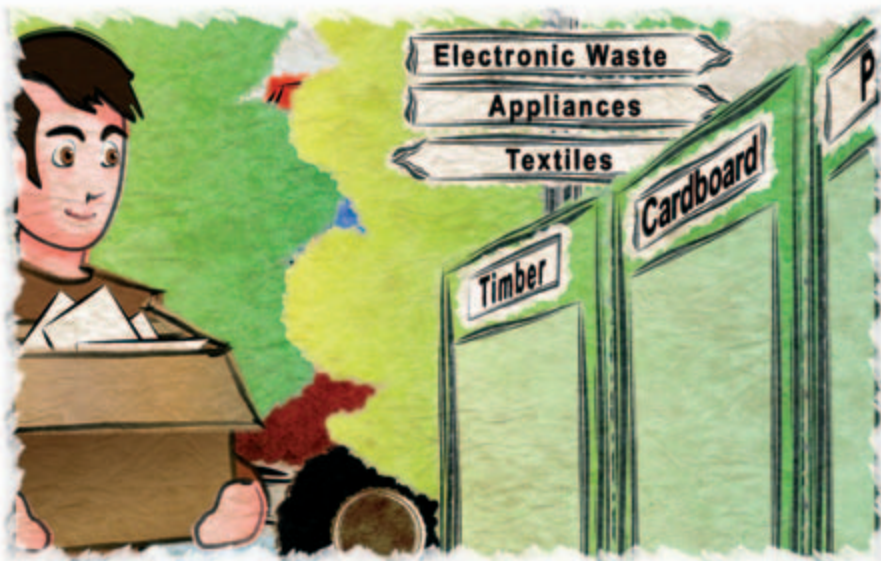


Car parts can be made from recycled aluminium.

CIVIC AMENITY SITES

Civic Amenity Sites or centres for bulky waste are controlled facilities where members of the public can bring and discard of a variety of waste items separately. Civic Amenity Sites cater for bulky waste such as tyres, refrigerators, electronic products, waste from DIY activities and garden waste. At these sites

there shall also be a Bring-in Site for the deposit of separated waste. No food waste can be disposed of at these sites. The aim of Civic Amenity Sites is to establish a service to centralise the collection of certain types of waste separately and therefore facilitate the recovery of secondary materials for recycling.



What can I dispose of at the Civic Amenity Sites?

You may dispose of the following items in separate containers:

- ✓ Recyclable waste: paper, carton, glass, metal, plastic
- ✓ Bulky waste: furniture, mattresses, carpets, tiles, appliances
- ✓ Garden waste
- ✓ Oils - cooking oil and engine oil
- ✓ Household hazardous waste - batteries including car batteries, *solvents*, neon tubes, medicines, chemicals, paints and varnishes, colourings, disinfectants, hair dye, nail polish and nail polish remover, fertilizer and fertilizer residues, pesticides and insecticides, turpentine, thermometers (with mercury), adhesives and glues
- ✓ White goods - fridges, cookers,

freezers, microwaves

- ✓ Electronic waste - computers, monitors, mobile phones, printers, toys, transmitters, electronic tools, watches, clocks
- ✓ Construction waste in small quantities and generated from DIY work
- ✓ Clothes and textiles
- ✓ Tyres



In Malta in one month we discard about:

- 20,000 tyres
- 5,000 mattresses

HOME COMPOSTING

Home composting is a way to speed up the natural process of decomposition and return organic materials to the soil. Garden trimmings and food scraps make up nearly 1/6 of what the average household throws into the garbage.

Why throw this stuff away when it can be put to good use in your plants and garden?

By composting, you can convert organic wastes - garden trimmings, leaves and many kinds of kitchen scraps - into a dark, crumbly mixture that can be used to improve the soil and reduce your use of fertilizer and water.

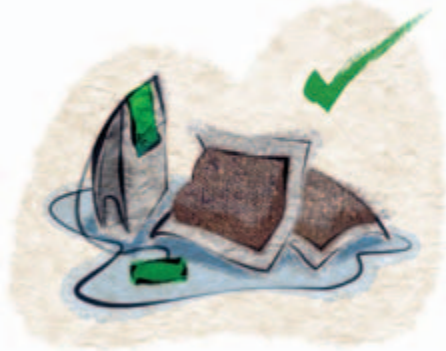


Step One - Placing Your Bin

Your bin is best placed directly on the soil or grass which will allow for excess water to drain out and makes it easier for worms to get in and get working on breaking down the contents.

Step Two - What goes in

Waste that can be included in your compost is divided into Greens and Browns. Greens are quick to rot and they provide important nitrogen and moisture. Browns are slower to rot. They provide fibre and carbon and also allow important air pockets to form in the mixture. Crushed eggshells can be included to add useful minerals.



Greens provide nitrogen, and act as a source of protein for the microbes that are hard at work in your compost pile.

- Green leaves
- Coffee grounds
- Tea bags
- Plant trimmings
- Raw fruit and vegetable scraps
- Fresh grass clippings
- Hair

Browns are a source of carbon, and provide energy for the microbes.

- Dried grasses, leaves and some weeds
- Straw
- Woodchips
- Twigs and branches
- Sawdust
- Shredded newspaper
- Corncobs and stalks



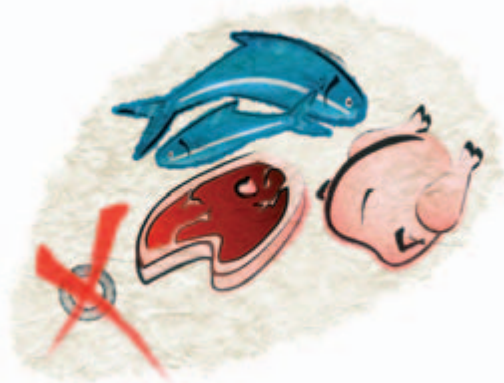
Step Three - What doesn't go in

Certain things should never be placed in your bin, the list include - cooked food, meat, fish, bones, dairy products, dog & cat faeces, diseased plants, glossy or coloured paper/card. Putting these in your bin can encourage unwanted pests and can also create odour.



Step Four - Making Good Compost

The key to good compost lies in getting the mix right. You need to keep your Greens and Browns properly balanced. If your compost is too wet, add more Browns. If it's too dry, add some Greens. Air is very important to the composting process, so include scrunched up bits of cardboard as a simple way to create air pockets that will help keep your compost healthy. After approximately 6-9 months your finished compost will be ready.



Step Five - Using Your Compost

Finished compost is a dark brown, almost black soil-like layer that you'll find at the bottom of your bin. It has a spongy texture and is rich in nutrients. Some bins have a small hatch at the bottom that you can remove to get at the finished product, but sometimes it's even easier to lift the bin or to tip it over to get at your compost. Spreading the finished compost into your flowerbeds greatly improves soil quality by helping it retain moisture and suppressing weeds. Composting is definitely the easiest and greenest way to make your garden grow more beautiful.



FREQUENTLY ASKED QUESTIONS

Do I need chemical accelerators?

No. Composting is an entirely natural process performed by living things and there is no need for other additives.



Where can I purchase a compost bin from?

WasteServ Malta Ltd offers subsidised compost bins. This scheme offering the general public the opportunity to buy bins at a subsidised price, was launched in March 2004.

Will it smell?

Composting should produce only a rich earthy smell. If a sharp ammonia smell is produced it is usually due to too much grass and not enough paper. Add some shredded paper and mix in to get that earthy smell back.



WASTE MANAGEMENT DIRECTORY

AGENCY/DEPARTMENT	QUERY/INFORMATION REQUIRED	TELEPHONE NUMBER
WasteServ Malta Ltd.	<p>Guidance on disposal of waste including domestic waste, construction waste, recyclable waste and hazardous waste.</p> <p>For vehicle registration procedure in order to enter waste management sites.</p> <p>Waste minimisation and waste separation.</p> <p>Waste management sites including Sant'Antnin Waste Treatment Facility, Maghtab Environment complex, bring-in sites and Civic Amenity Sites.</p>	<p>Freephone 800 7 2200* or 2385 8000</p>
Government Environment Services	<p>Illegal development</p> <p>Nature protection</p> <p>Pollution control</p> <p>WasteServ</p> <p>Public cleansing</p> <p>Illegal dumping</p> <p>Bulky refuse</p> <p>Dead animals on roads or spillage of material from trucks on roads</p> <p>Environment department</p>	<p>Freephone 800 7 2210*</p>

* Freephone numbers cannot be reached by mobile



info@wasteservmalta.com • Freephone 800 7 2200



WasteServ Malta Ltd



STRUCTURAL FUNDS PROGRAMME FOR MALTA 2004-2006
PROJECT PART FINANCED BY THE EUROPEAN UNION
EUROPEAN REGIONAL DEVELOPMENT FUND
CO-FINANCING RATE: 73%

